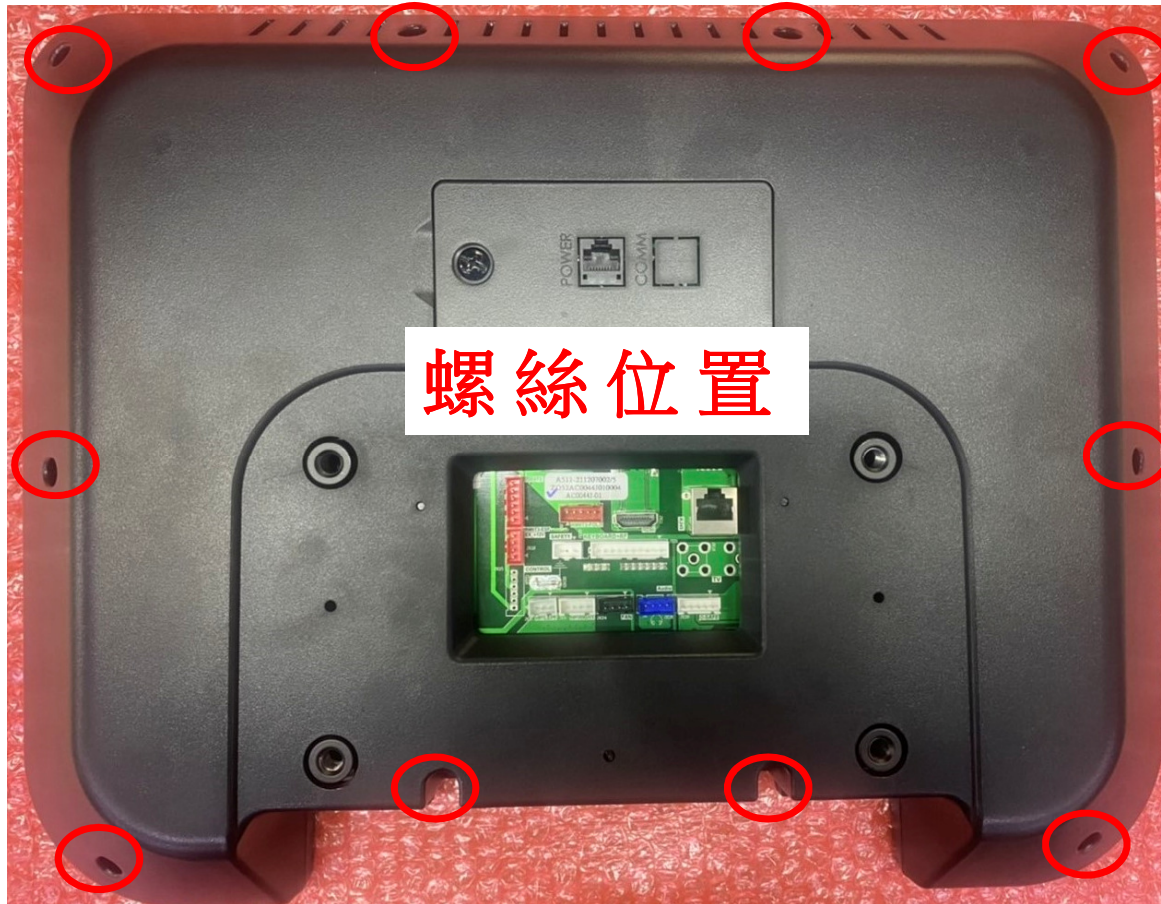
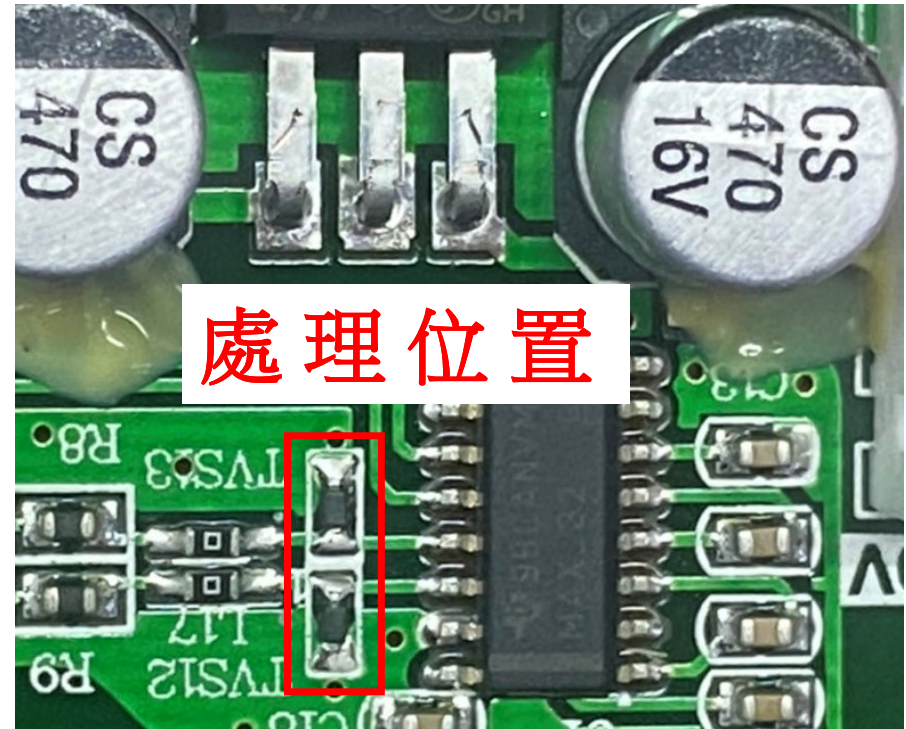
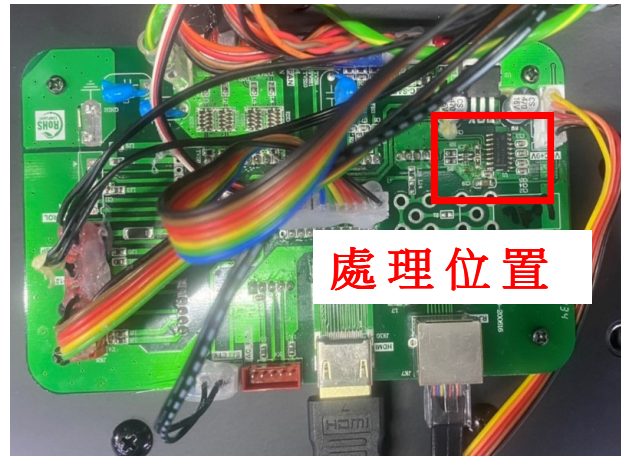
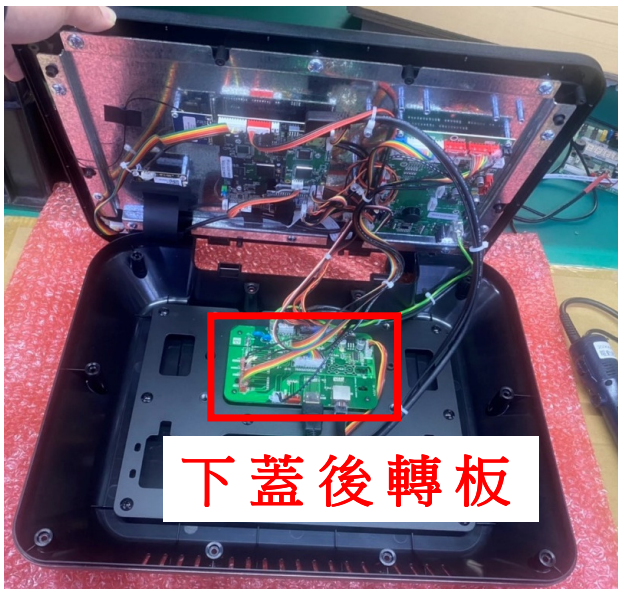


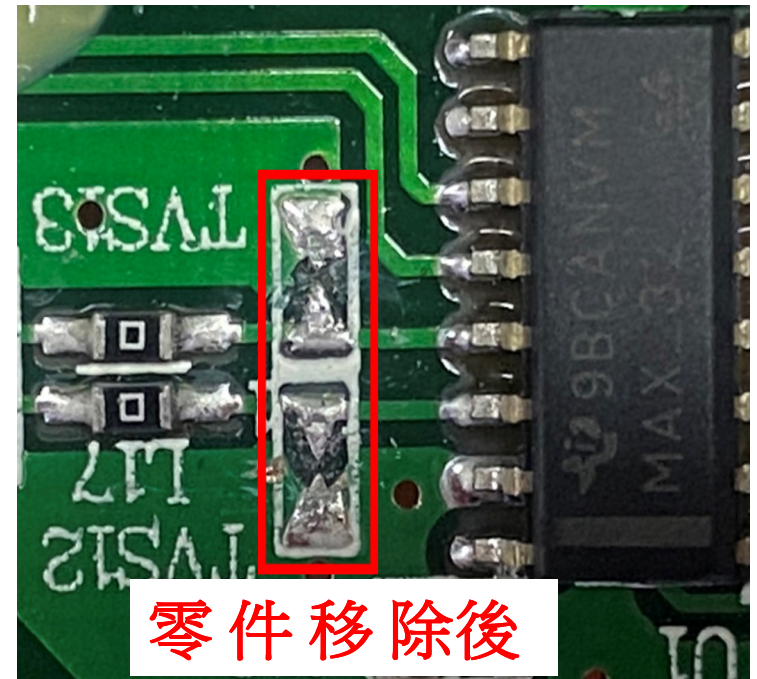
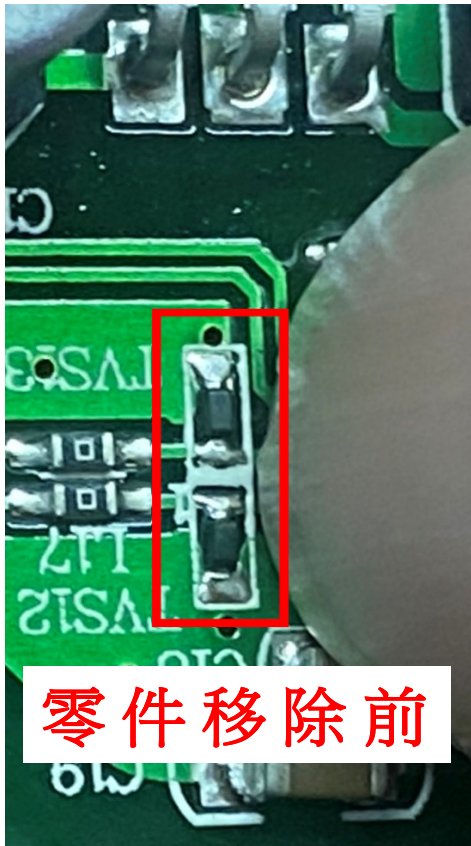
1. 將後蓋螺絲 (10 顆) 鬆開取下。



2. 面板朝上掀開上殼，線材要注意不可拉扯，需處理的位置如下。



3. 使用尖嘴鉗或斜口鉗將 TVS12、TVS13 上的零件移除。(注意不可割到線路)



4. 將上殼蓋回後 (線材要注意不可壓到) ，  
將螺絲裝回去 (10 顆) 。

