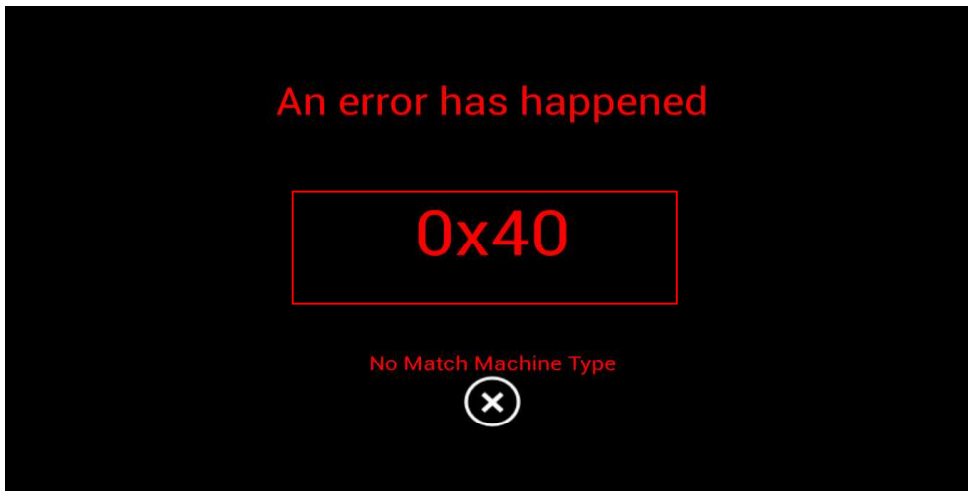


Error Code :

Disable Error Code Screen : click 10 times on “ Code Number into red box”.



Machine define Error Code

Data	Description	Remarks
01H	Low voltage trip	By RM6T5/Delta
02H	Abnormal temperature sensor	By RM6T5/Delta
04H	Output overcurrent	By RM6T5/Delta
06H	Inverter overvoltage	By RM6T5/Delta
08H	Abnormal ground	By RM6T5/Delta
09H	Inverter overheat	By RM6T5/Delta
0AH	Motor overload	By RM6T5/Delta
0BH	Inverter overload	By RM6T5/Delta
0CH	System overload	By RM6T5/Delta
0DH	Motor disconnection detection	By RM6T5/Delta
0EH	Brake fault	By RM6T5/Delta
21H	Flash drive program failure	By RM6T5/Delta
22H	EEPROM failure	By RM6T5/Delta
23H	Low voltage display	By RM6T5/Delta
25H	Emergency Stop (ESP)	By RM6T5/Delta
29H	Motor overheat	By RM6T5/Delta
40H	Un-know mode	By MCU Board
41H	RM6T5 no-response	By MCU Board
42H	Bike board no-response	By MCU Board

44H	Console I2CNo-response	By MCU Board
50H	Abnormal Update MCU FW	By MCU Board
800H	Bike Abnormal Power Output(12V)	By Bike board
801H	Bike Abnormal Power Input(24V)	By Bike board
802H	EM Fail	By Bike board
806H	Bike Programming flash error	By Bike board
80FH	LCB Type Setting Failure	By Bike board
816H	Abnormal Update Bike FW	By Bike board
EAH	UCB Is Not Math LCB Device	GUI
ECH	UCB To LCB Is No Response	GUI
EDH	LCB Unknown Device	GUI

DELTA Errors

Error code	Description	Remarks
0x0101	Inverter over current	By Delta
0x0103	Inverter temperature sensor failure	By Delta
0x0104	Internal current overload	By Delta
0x0105	Internal power relay overload	By Delta
0x0112	Inverter overload	By Delta
0x0107	Inverter Flash program failure	By Delta
0x0110	Inverter Flash read failure	By Delta
0x0108	Inverter inner exception	By Delta
0x0109	Inverter hardware interrupt failure	By Delta
0x010A	Inverter acceleration over current	By Delta
0x010B	Inverter deceleration over current	By Delta
0x010C	Inverter working over current	By Delta
0x010D	Inverter grounding protection failure	By Delta
0x010E	Internal voltage too low.	By Delta
0x0106	Inverter external exception	By Delta
0x0111	Outside interrupt	By Delta
0x0113	Automatic acceleration mode failure	By Delta
0x0114	Software protection.	By Delta
0x0116	Low current	By Delta
0x0117	Overshoot detection	By Delta
0x0118	Over speed	By Delta
0x0119	Internal DC voltage too high	By Delta

0x011A	PG feedback failure	By Delta
0x011B	Communication failure	By Delta
0x011C	ModBus address failure	By Delta
0x011D	ModBus data failure	By Delta
0x011E	ModBus command failure	By Delta
0x011F	Communication timeout.	By Delta